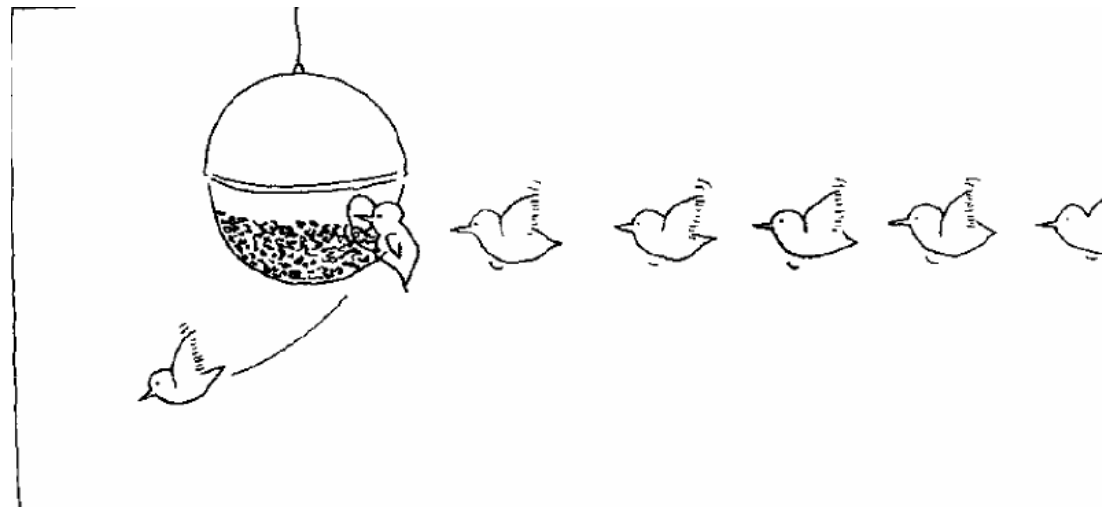
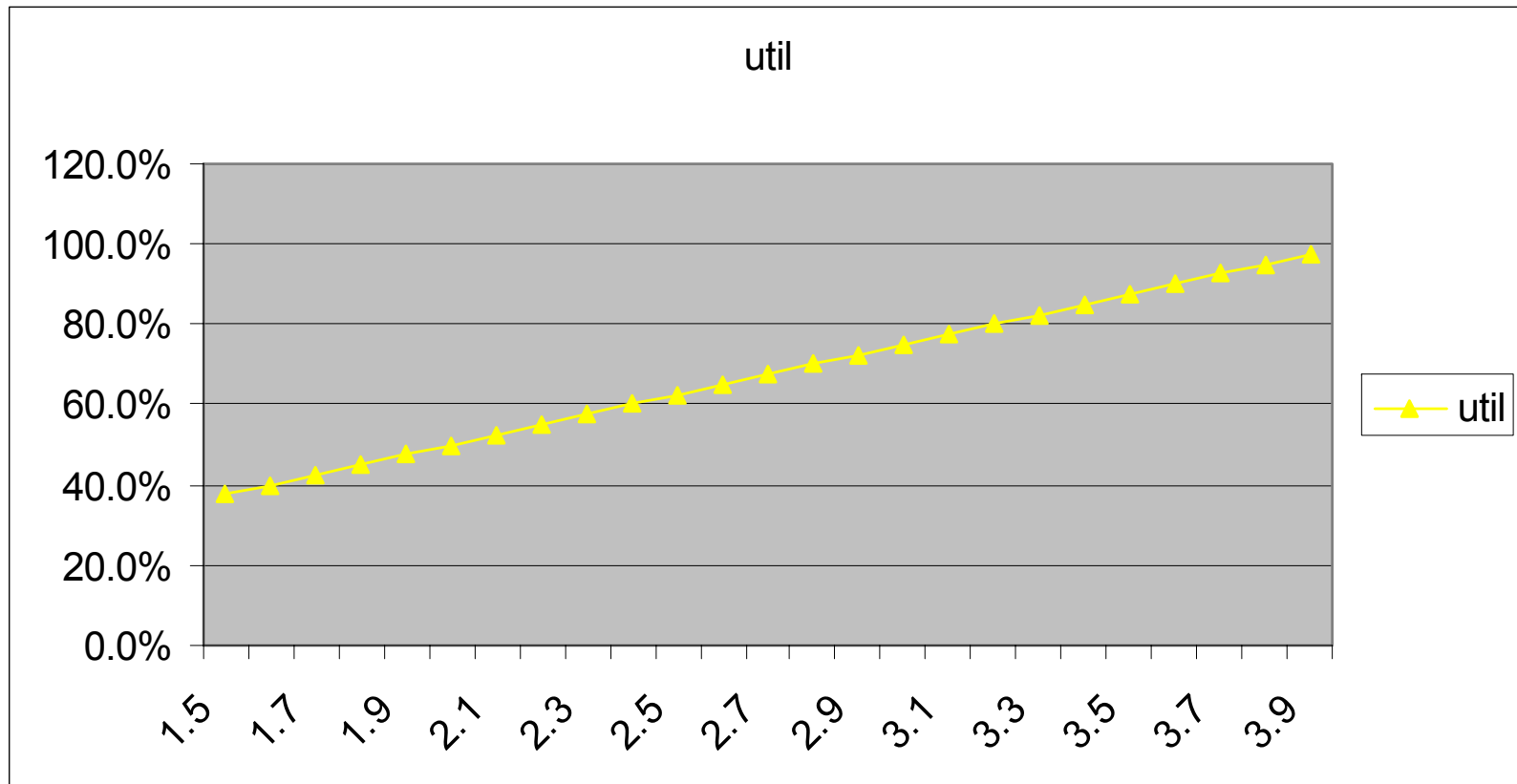


تحليل صف با يک خدمت دهنده



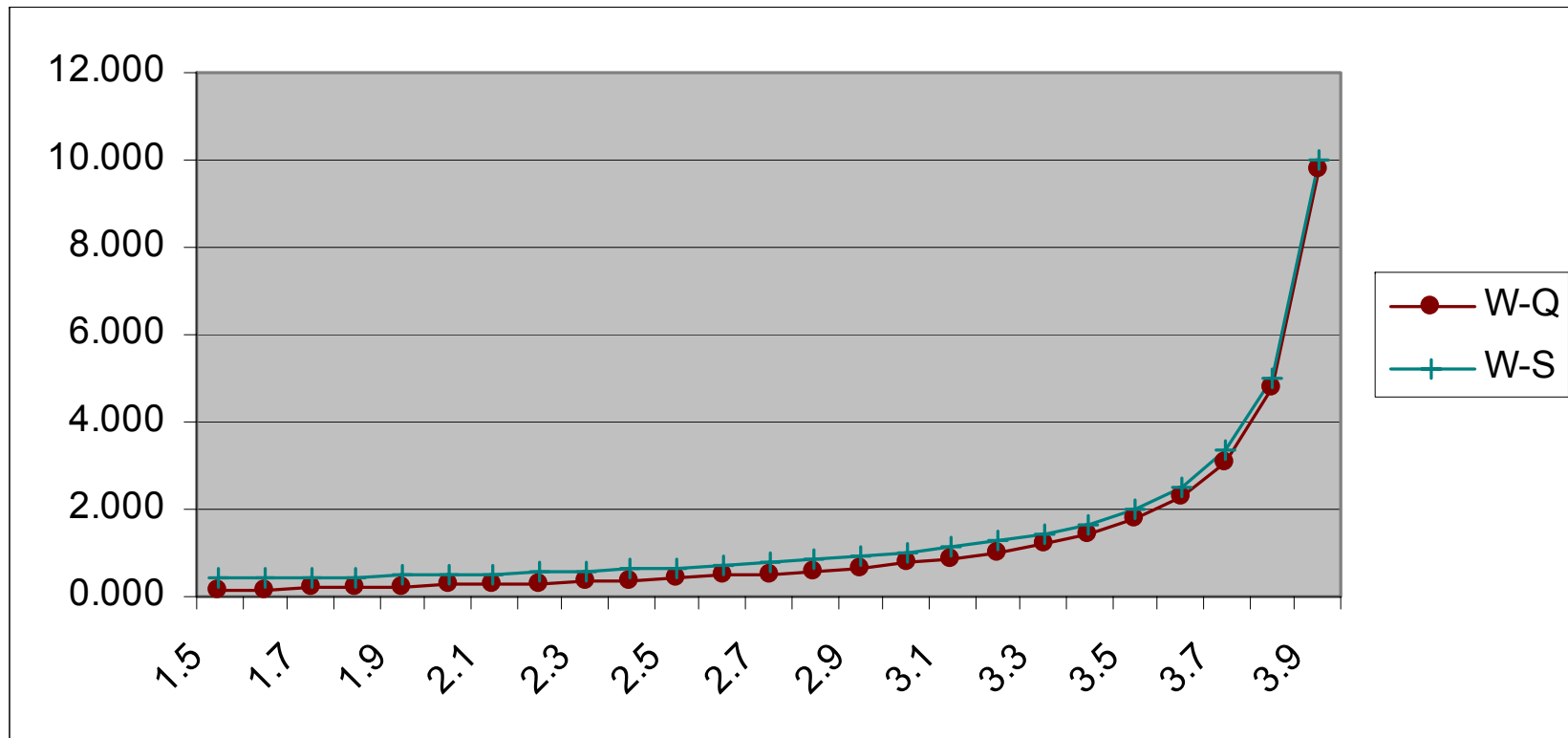
سناریوی افزایش ورودی

Utility



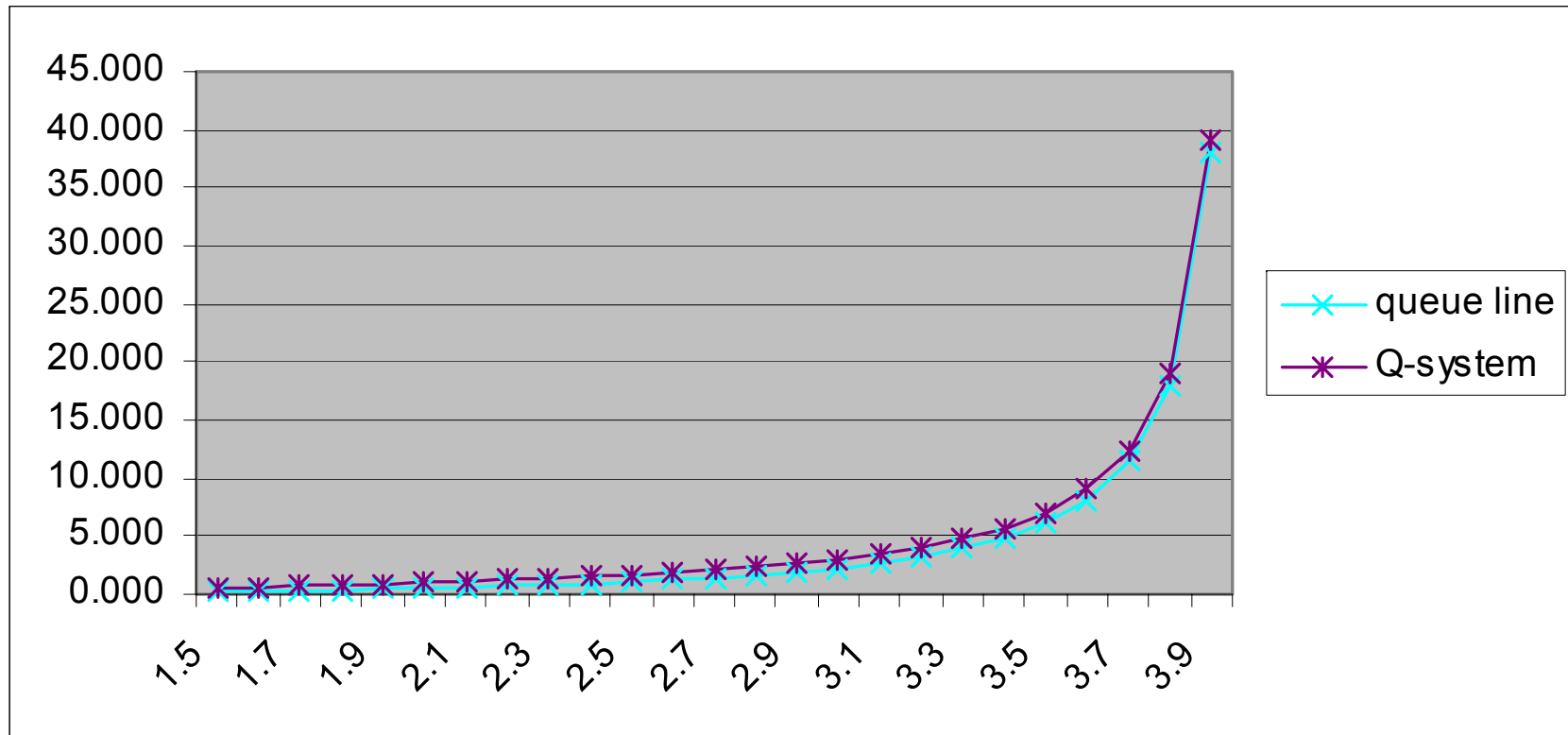
$\mu = 4$ $\lambda = [1.5, 4]$

Waiting Time



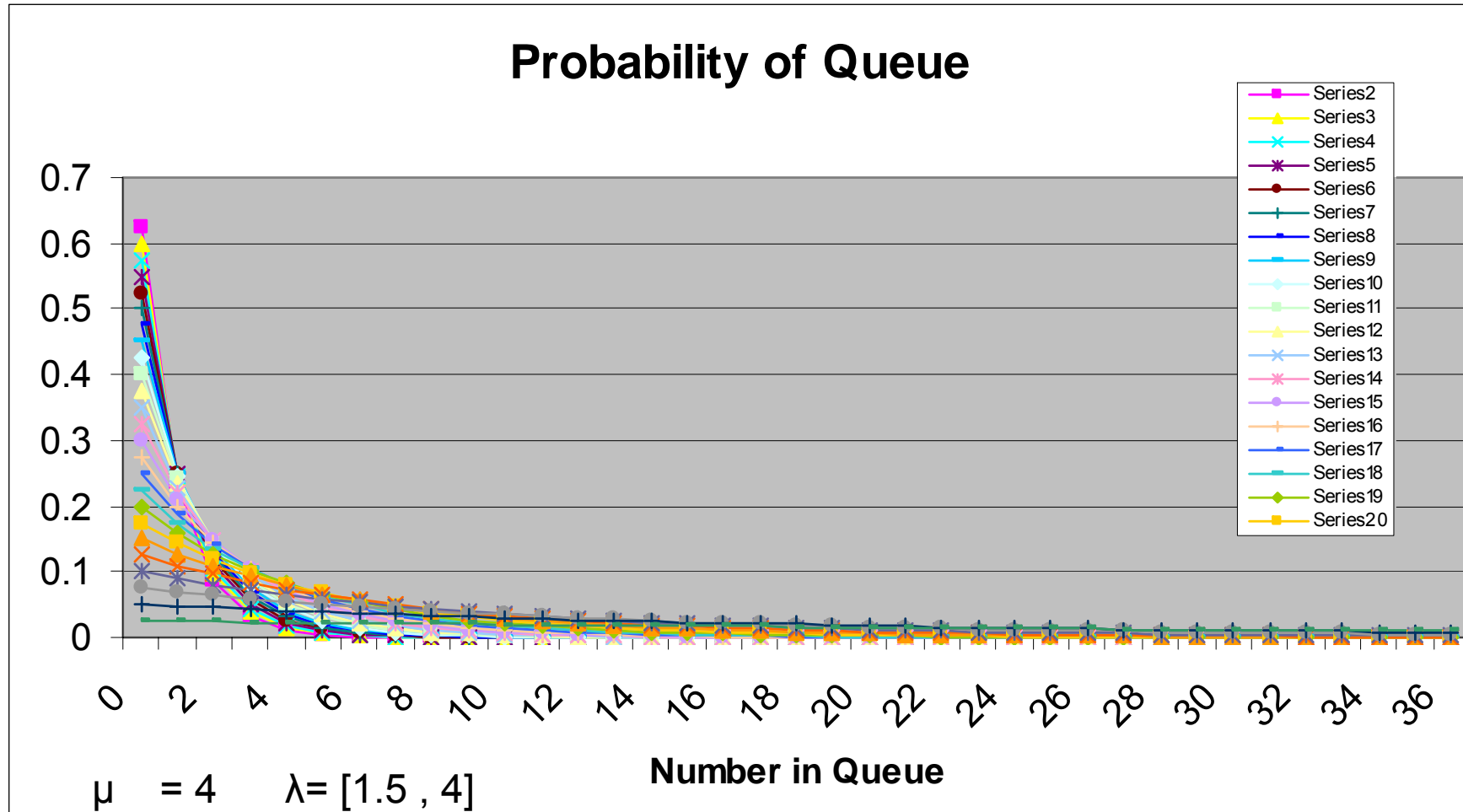
$$\mu = 4 \quad \lambda = [1.5, 4]$$

Queue



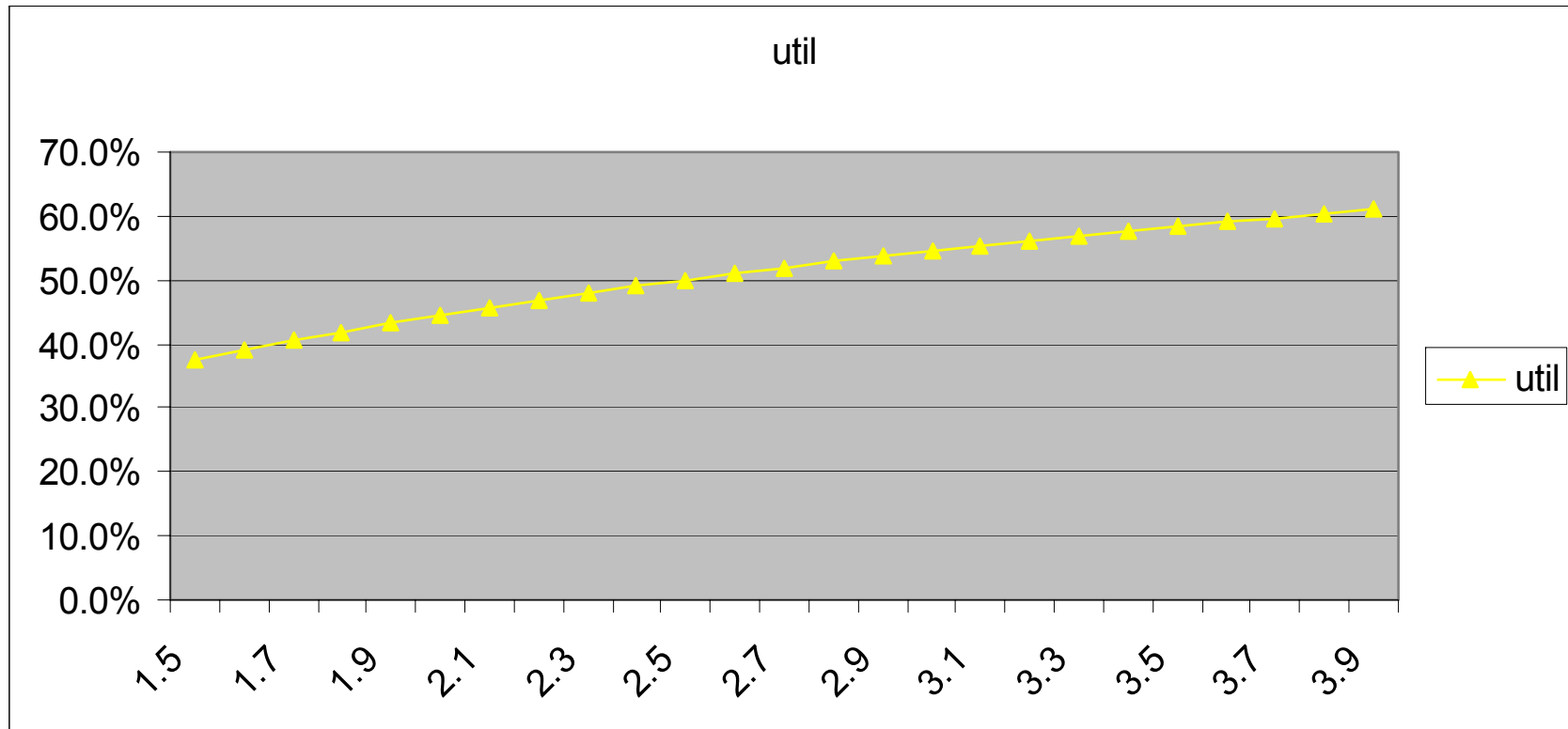
$$\mu = 4 \quad \lambda = [1.5, 4]$$

چگالی احتمال صف



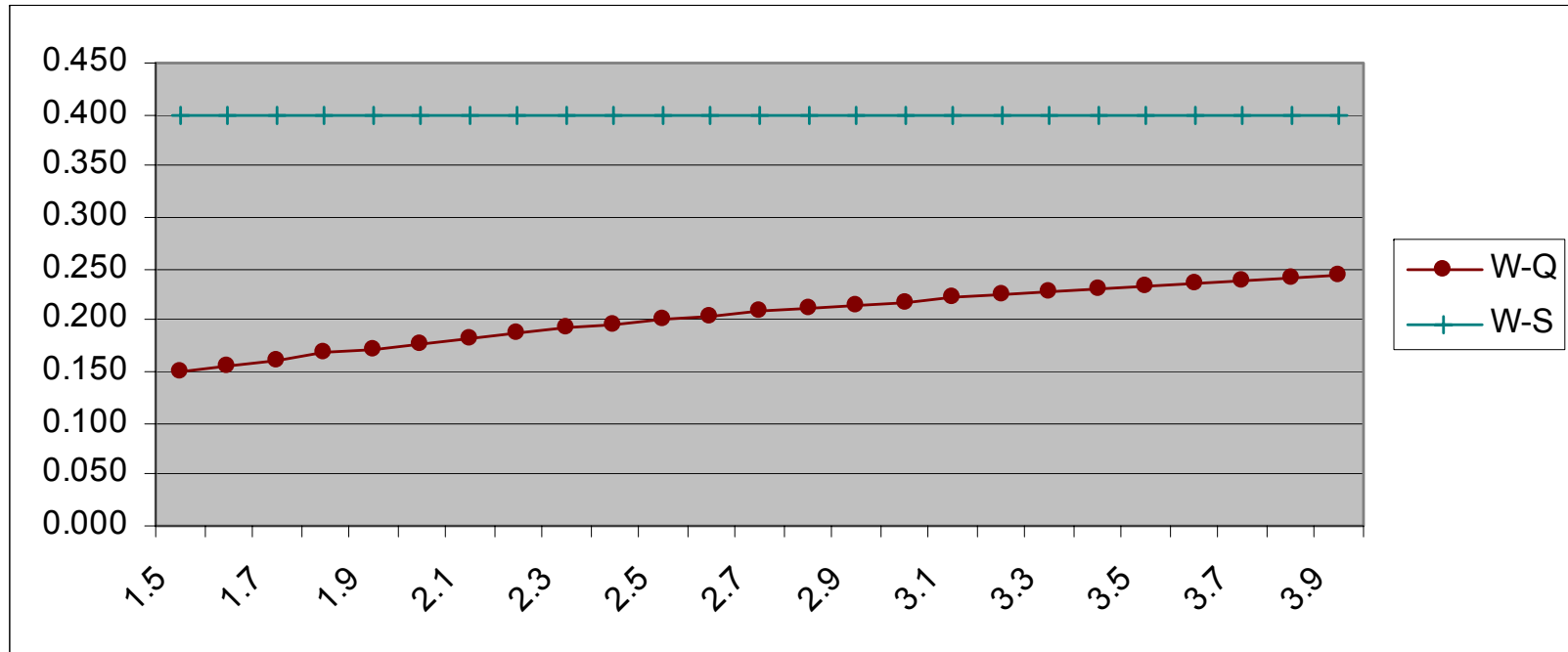
سناریوی افزایش خدمت دهنده

Utility



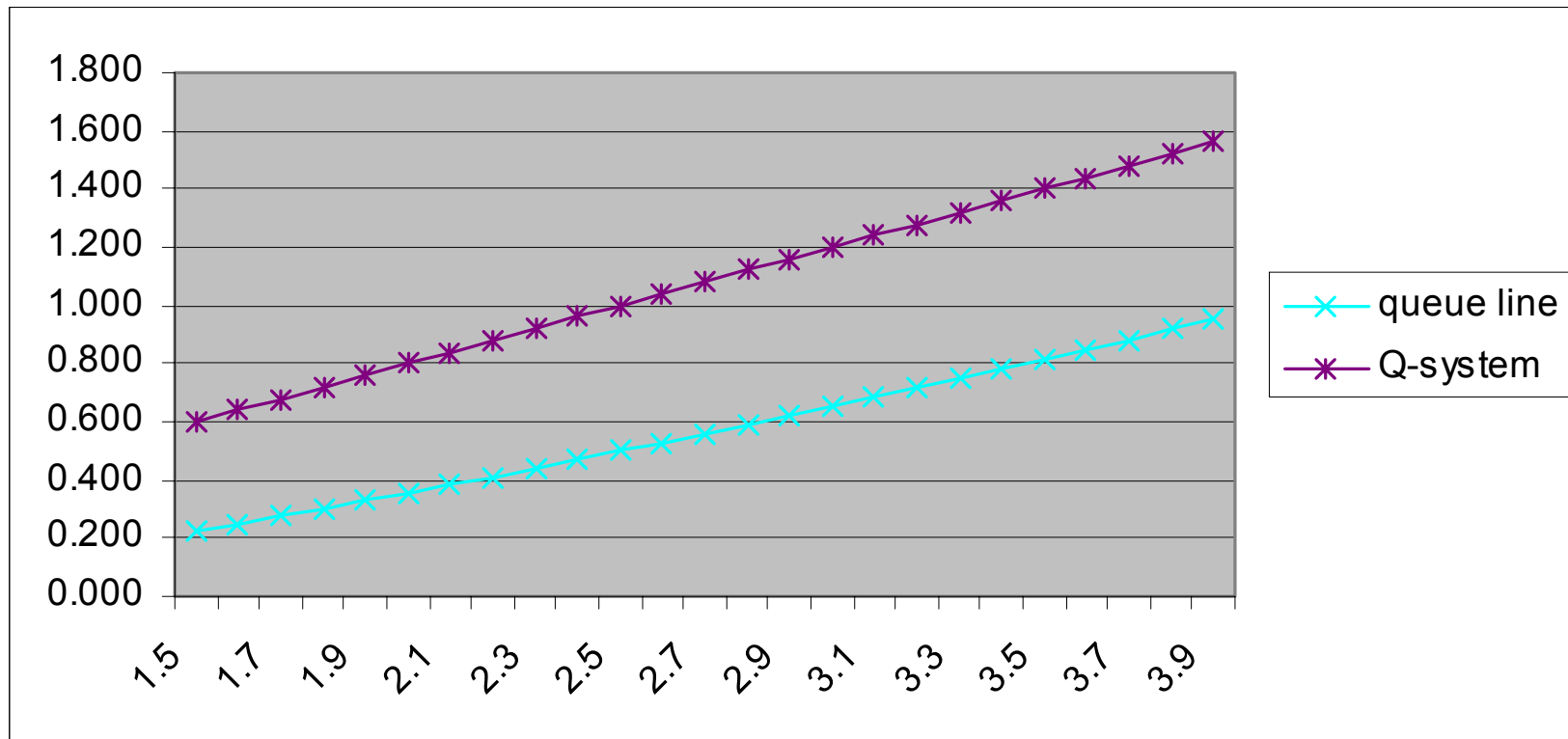
$$\mu = [4, 6.5] \quad \lambda = [1.5, 4]$$

Waiting Time



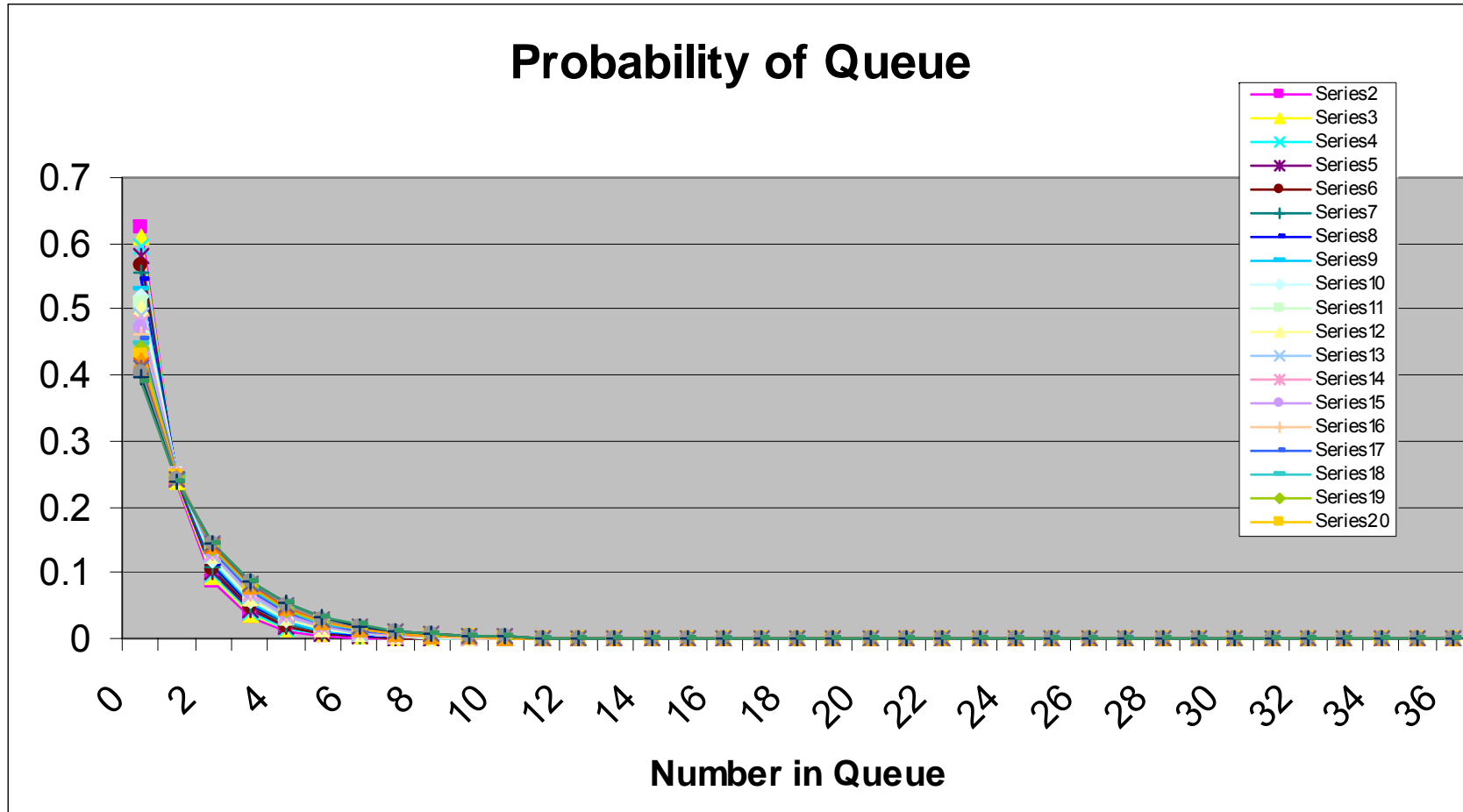
$$\mu = [4, 6.5] \quad \lambda = [1.5, 4]$$

Queue



$$\mu = [4, 6.5] \quad \lambda = [1.5, 4]$$

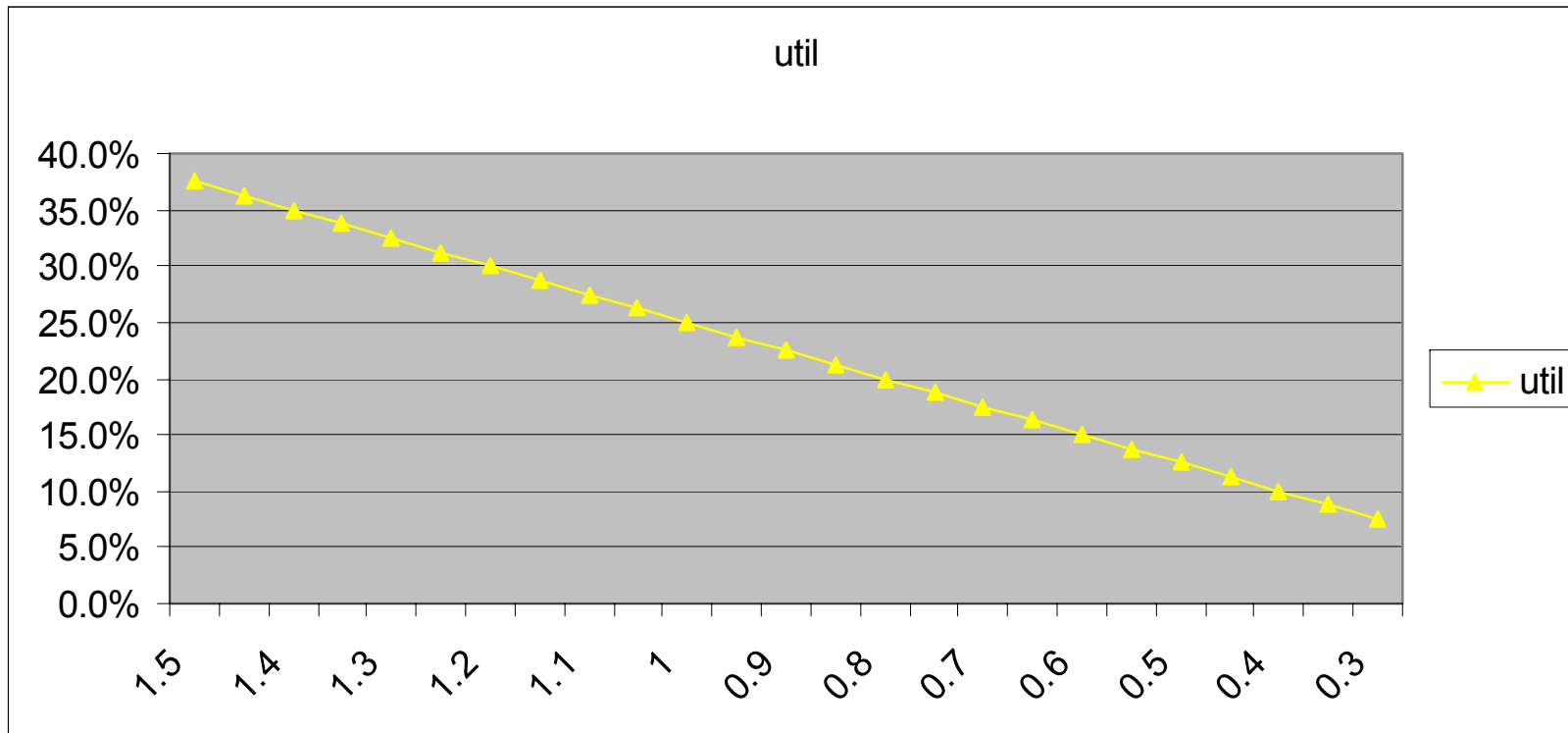
چگالی احتمال صف



$$\mu = [4, 6.5] \quad \lambda = [1.5, 4]$$

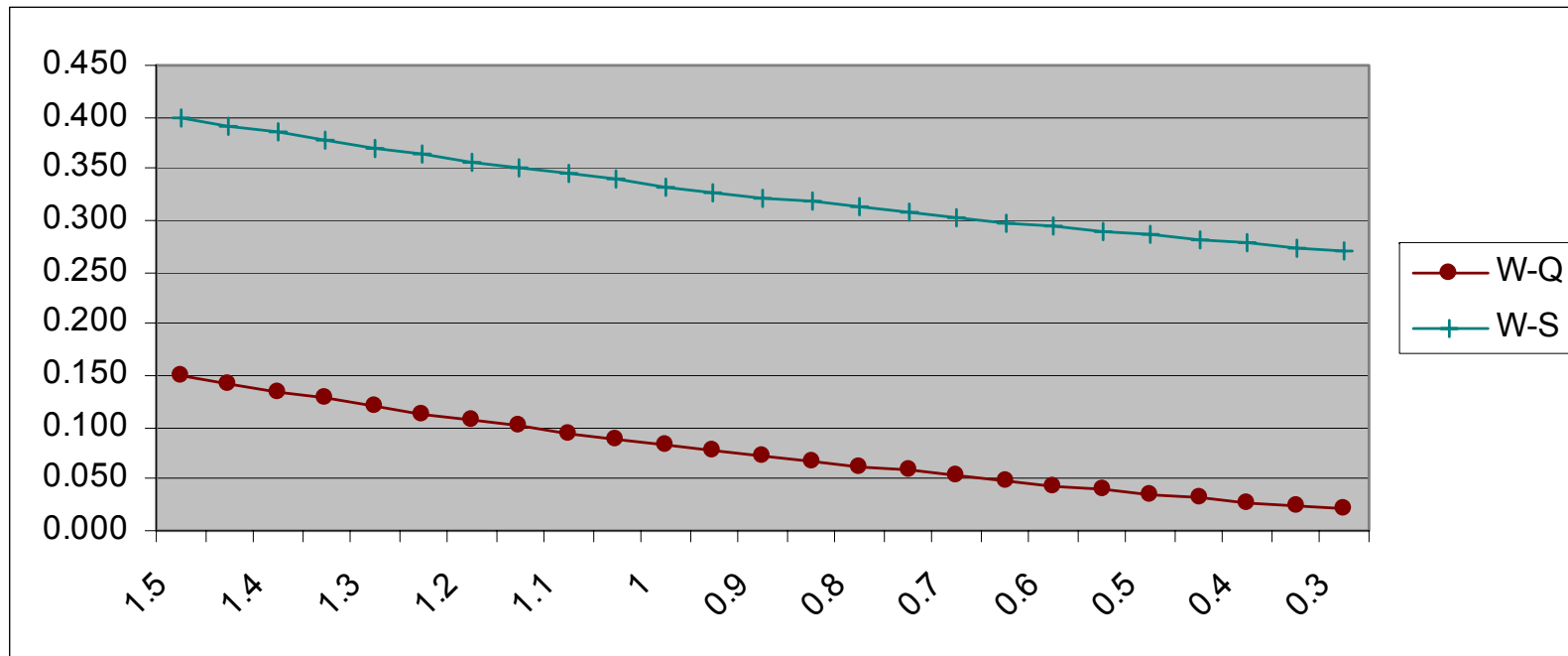
سناریوی کاهش ورود

Utility



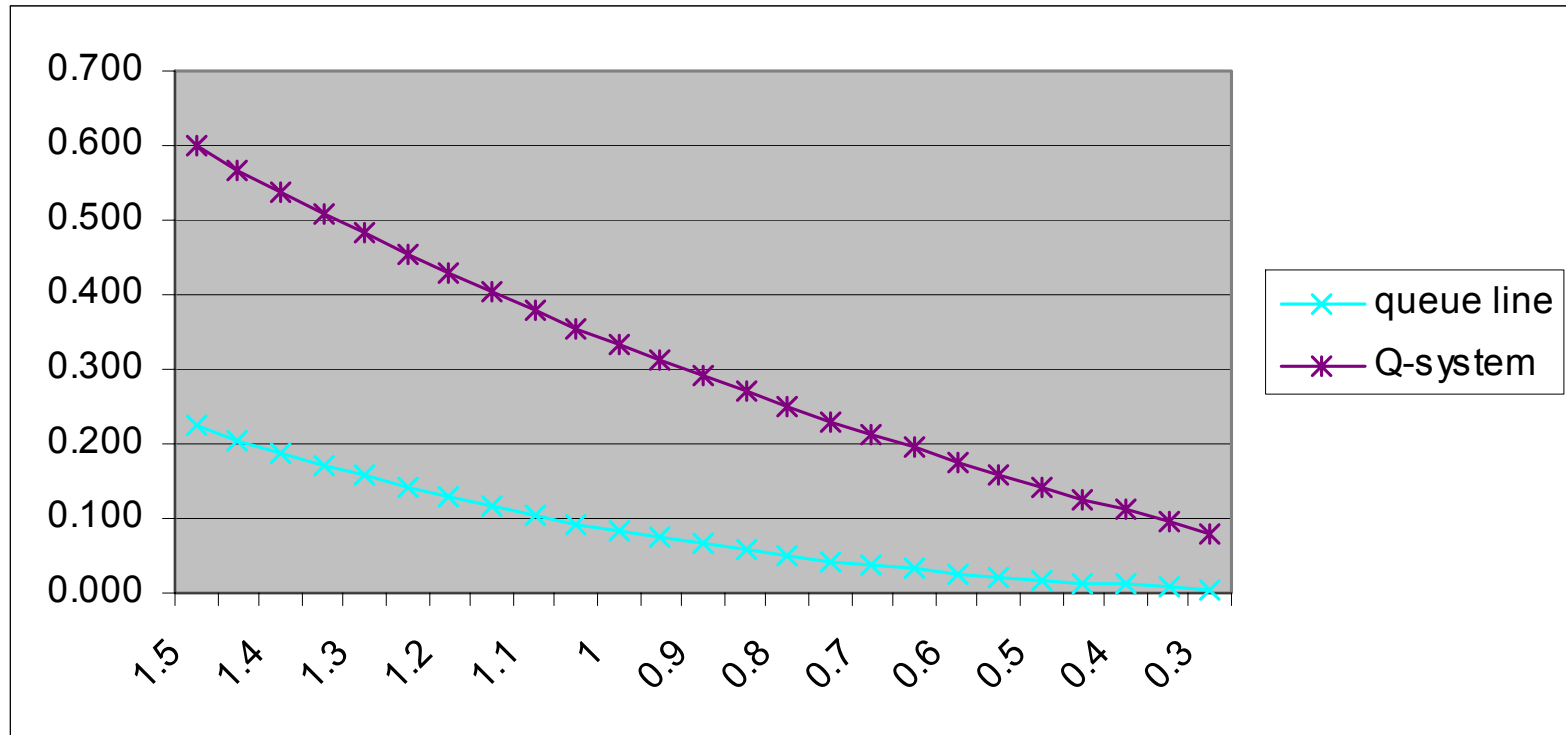
$$\mu = [4, 4] \quad \lambda = [0.25, 4]$$

Waiting Time



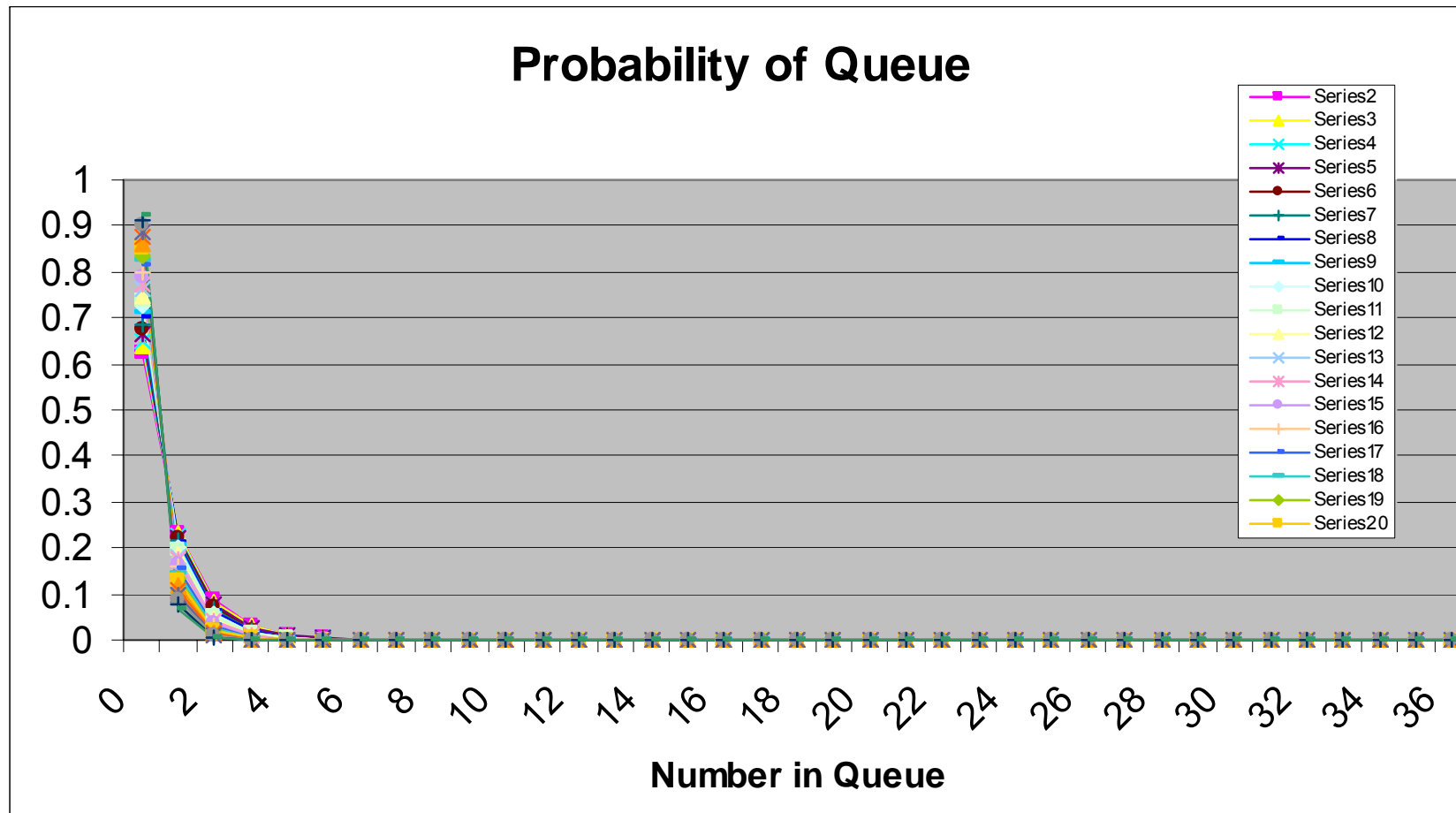
$$\mu = [4, 4] \quad \lambda = [0.25, 4]$$

Queue



$$\mu = [4, 4] \quad \lambda = [0.25, 4]$$

چگالی احتمال صف



$$\mu = [4, 4] \quad \lambda = [0.25, 4]$$